

***ELITE* A.G**

SUCTION BARTACKING SYSTEM

ADRESS : YENIGUN MAHALLESİ BAGCILAR CADDESİ 615.SK. NO 14/A BAGCILAR/İSTANBUL

YONTEM MAKİNE SERVICE NETWORK

SERVICE HOTLINE : +90 212 433 7743

: +90 212 552 7979

: +90 506 137 8400

E-MAIL : iletisim@yontemmakine.com

WEB : www.yontemmakine.com

SUCTION BARTACKING SYSTEM



MODEL FORM FOR BARTACKING

BRAND NAME	MODEL SERIAL	CUTTING SYSTEM	SENSORS+SUCTION
BROTHER	430 D	●	●
	430 F	●	●
	430 H	●	●

SUCTION BAR TACKING SYSTEM**Inductive Sensor**

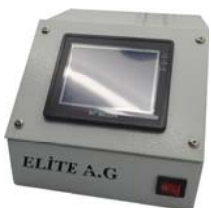
All-round-visible
Inducator
Laser printed part numbers

**Reflected Prismatic Photocell**

Protected against short circuit and phase surges
Operating temp : -15 / +55 degree
Response time below 3ms

**Regulator**

Maintenance free
Max. Operating pressure 1.0 Mpa
Filtration 5 micron
High performance

**Control Box**

Compact unit
Programmable logic controller
Touch screen

**Vacuum Part**

Air consumption saving (%70 for air blows)
Maintenance free.
High performance reliability.
Simple & easy to operate
Quiet operation.
Safe suction.

**Foot**

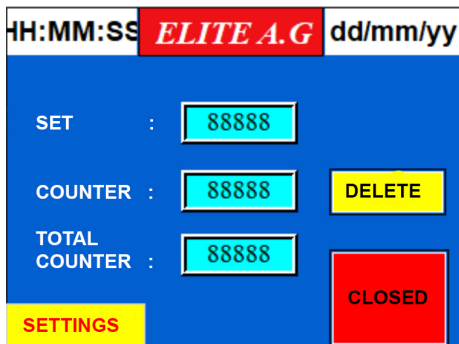
Custom design
Simple & easy to operate.

**Valves**

Series offers high flow with low power consumption is a compact design.
Max. operating frequency (Hz) : 10
Impact/Vibration resistance (ms/s²) 150/30

***ELITE* A.G**

Manual



SET : Enter working quantity.

COUNTER : Already finished quantity. you can reset with DELETED button.

TOTAL COUNTER : This shows total working qty, from beginning. You can reset if you wish.

SETTINGS : Switches to the settings screen

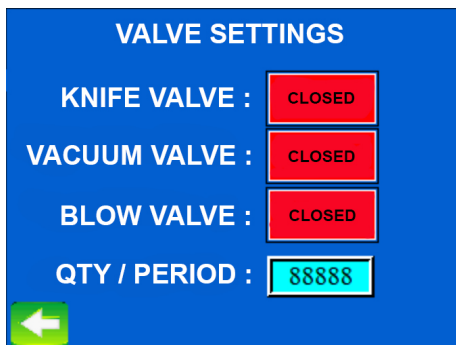
CLOSED : System Off



Knife Time : Default : 100ms

Vacuum Time : Default 300ms

Blow Time : Default 50ms

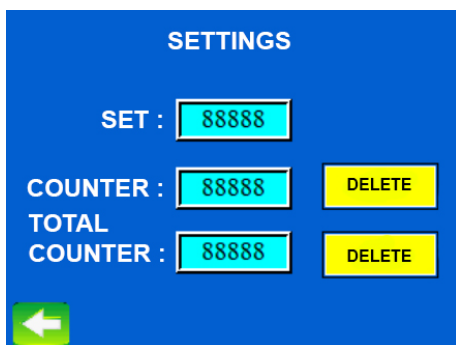


Knife Valve : Manually close knife valve.

Vacuum Valve : Manually close vacuum valve.

Blow Valve : Manually close blow valve.

QTY/PERIOD : System working x ? : 1 pcs.



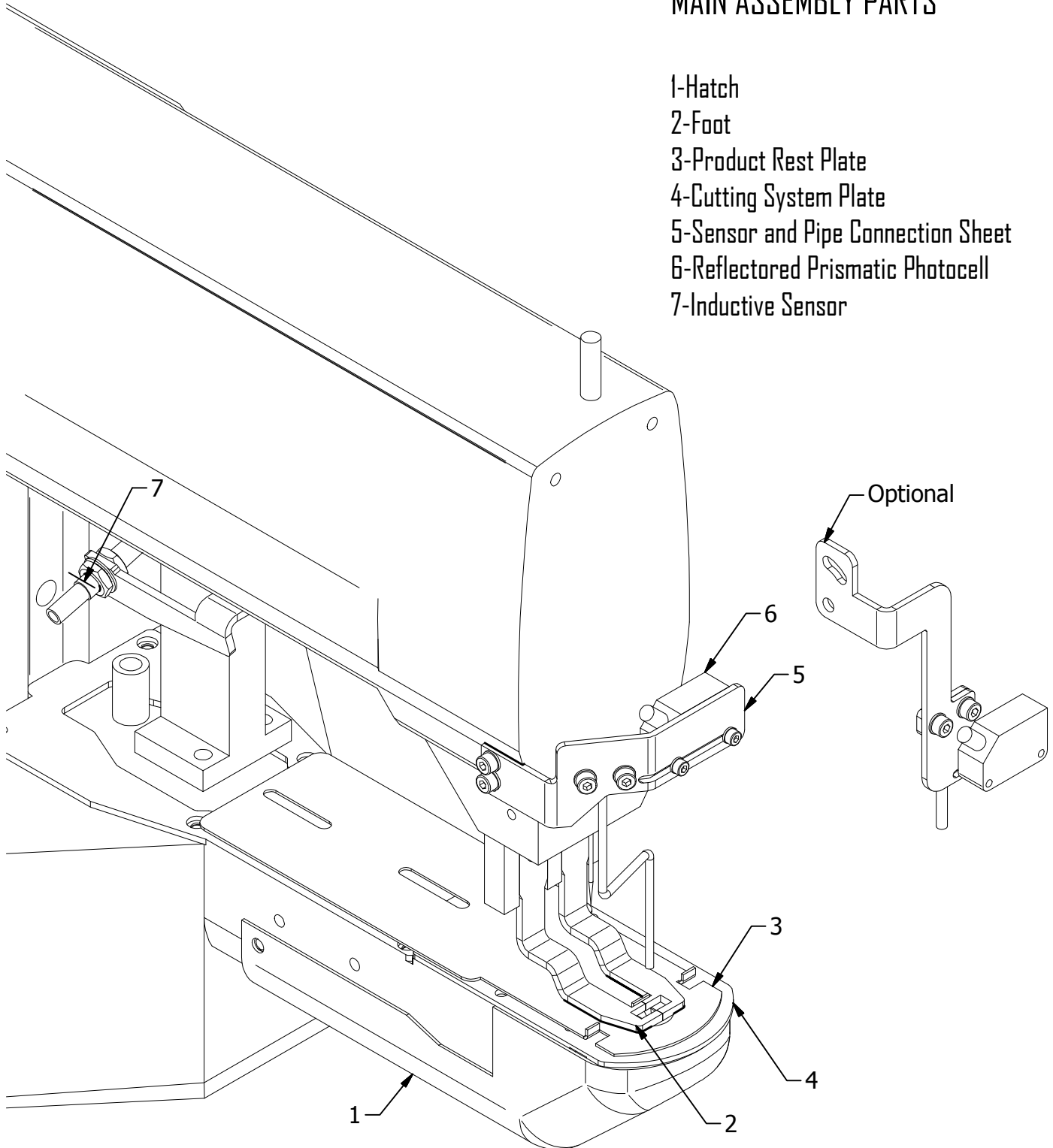
Total Counter : This shows total working qty, from beginning. You can reset with DELETED button.

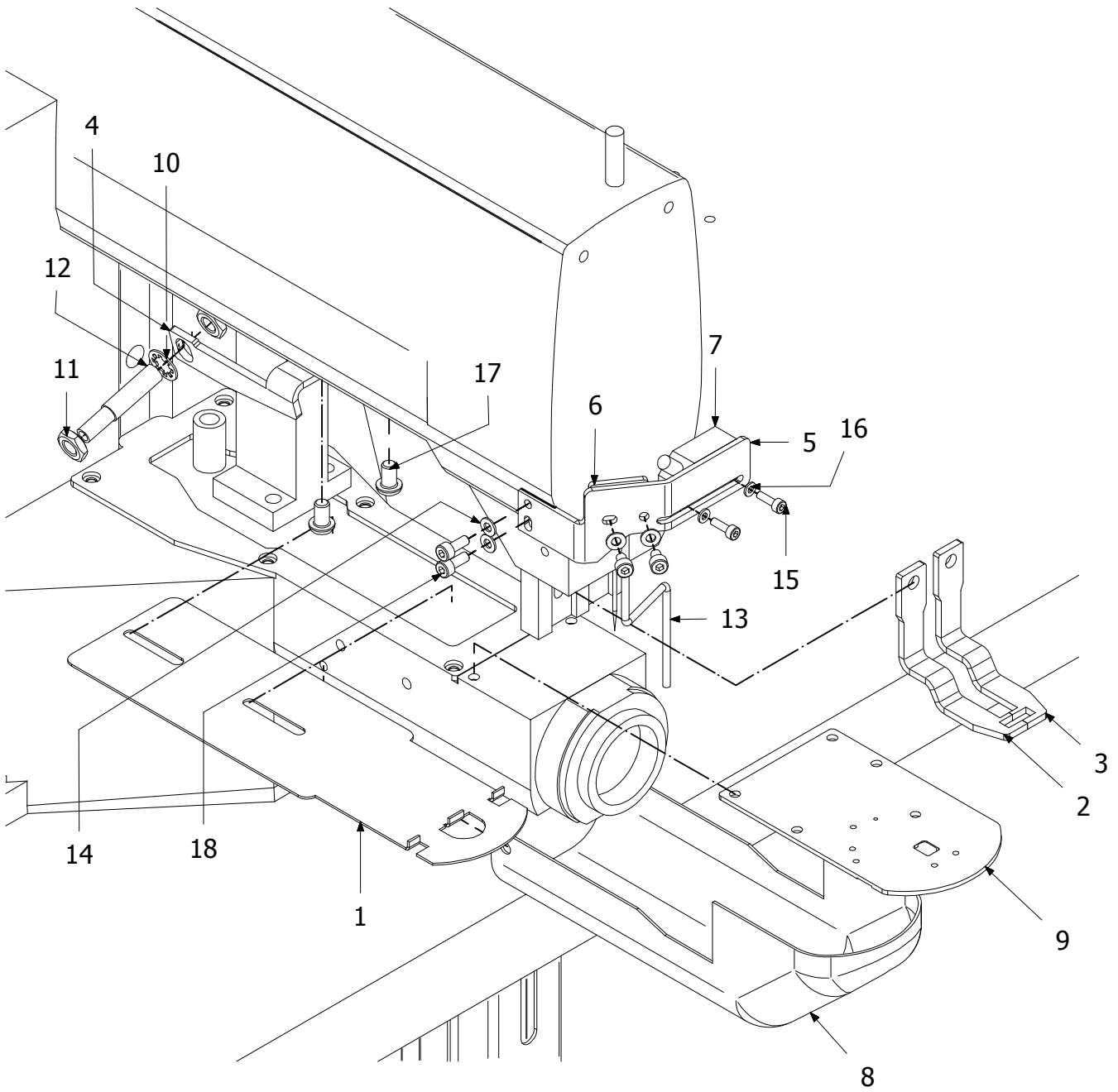
ELITE **A.G**

Part List

SUCTION BARTACKING SYSTEM MAIN ASSEMBLY PARTS

- 1-Hatch
- 2-Foot
- 3-Product Rest Plate
- 4-Cutting System Plate
- 5-Sensor and Pipe Connection Sheet
- 6-Reflected Prismatic Photocell
- 7-Inductive Sensor





ASSEMBLY STEPS

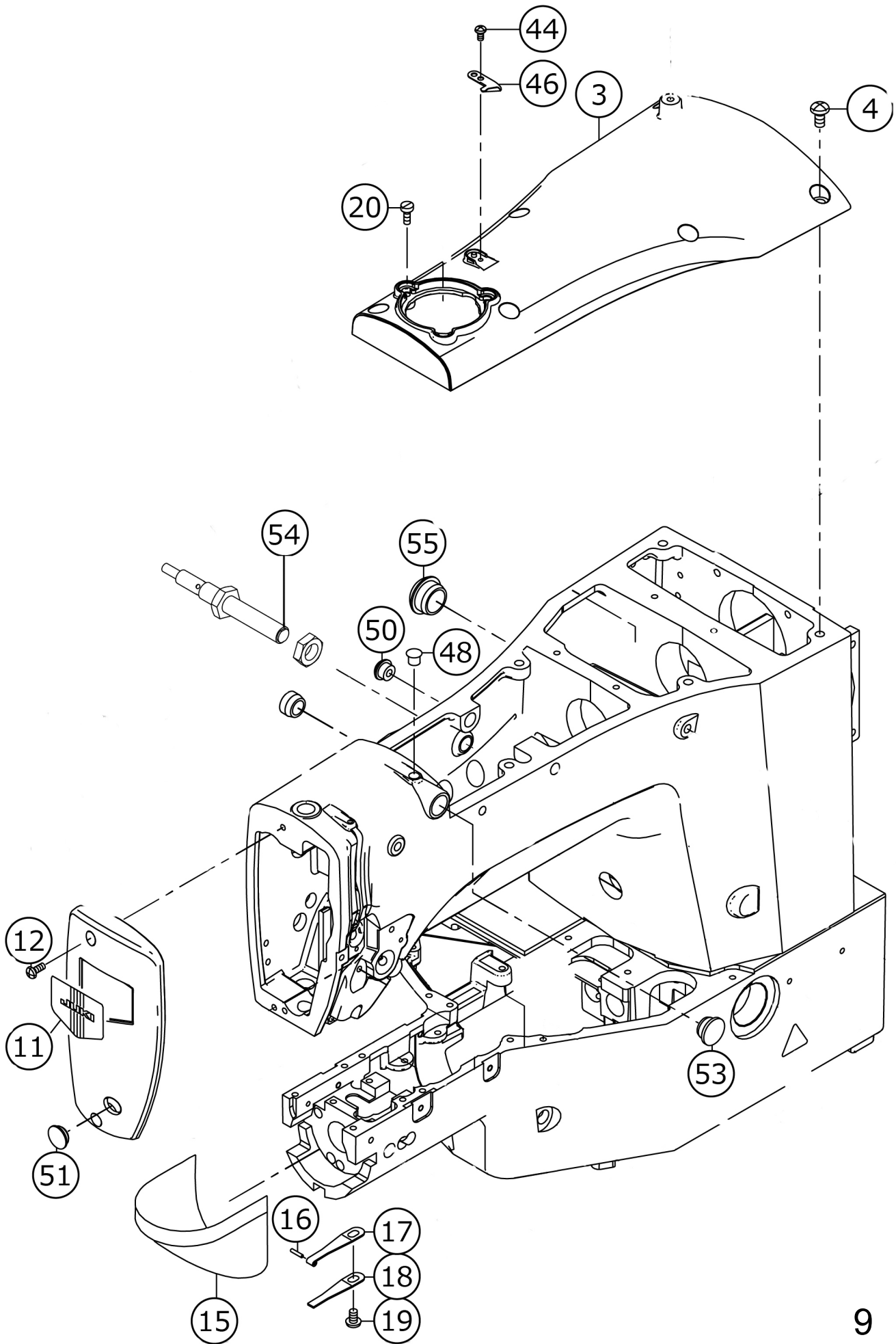
- 1-Loosen the screws and disassemble hatch (8)
- 2-Loosen the screws and replace the plate (9)
- 3-Replace Foot (2) (3)
- 4-Replace part number (1)
- 5-Attach the sensors as shown in the picture (4) (5)

ITEM	QTY	DESCRIPTION	PART NUMBER
1	1	Product Rest Plate	LSC_06
2	1	Foot L	LSC_01
3	1	Foot R	LSC_02
4	1	Sensor Connection Sheet	LSC_05
5	1	Pipe And Sensor Assembly Sheet	LSC_03
6	1	Pipe Clip	LSC_04
7	1	Photocell	LSC_07
8	1	Hatch	LSC_08
9	1	Cutting System Plate	LCS_PLATE
10	1	Toothed Lock Washer	LCS_M8
11	2	Hex Nut	LCS_M8_NUT
12	1	Inductive Sensor	LSC_09
13	1	Cooper Pipe	
14	4	Plain washers for clevis pins - Product grade A	ISO 8738 - 4
15	2	Hexagon Socket Head Cap Screw	ISO 4762 - M3 x 10
16	2	Plain washers for clevis pins - Product grade A	ISO 8738 - 3
17	2	Hexagon Socket Button Head Screw - Product grade A	ISO 7380-1 - M6 x 10
18	2	Hexagon Socket Head Cap Screw	ISO 4762 - M4 x 10



WARNING : IF YOU EXPERIENCE PROBLEMS WITH THE CUTTING SYSTEM, REPLACE THESE THREE PARTS IN YOUR CURRENT MACHINE WITH THE PARTS ON THE SUPPLIED PRODUCT.

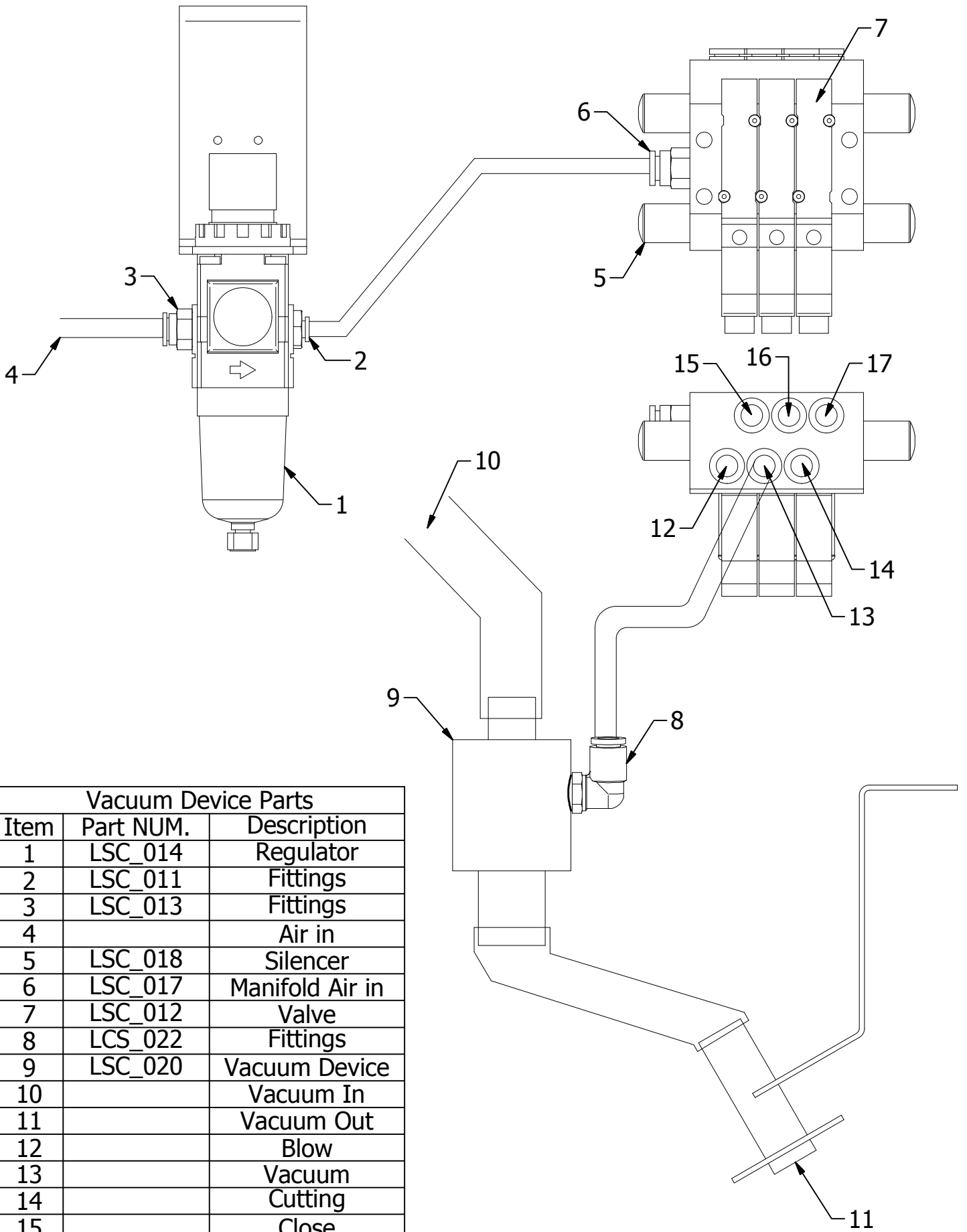
LK-1900 ASS JUKI TYPE



ITEM	QTY	DESCRIPTION	PART NUMBER
11	1	Face Plate	22902506
12	2	Screw	SM4041055SP
51	1	RUBBER PLUG D=12.5 L=4	TA1250406R0
15	1	Cylinder Arm Cap	13816855
16	1	Hook Cover Presser Spring Pin	13508700
17	1	Hook Cover Presser Spring A	13508809
18	1	Hook Cover Presser Spring B	13508908
19	1	Screw	SM5040855SN
54	1	Inductive Sensor	LSC_033
50	2	Rubber Plug	TA1050504R0
55	6	Rubber Plug	LCS_M8_NUT
48	1	Inductive Sensor	LSC_09
3	1	Upside Cover	40006478
4	6	Screw M6 L=12	SM4061255SP
44	1	Screw	SM4030601SN
46	1	Thread Cutter	10502300
20	3	Screw M4 L=11	SM6041150TP

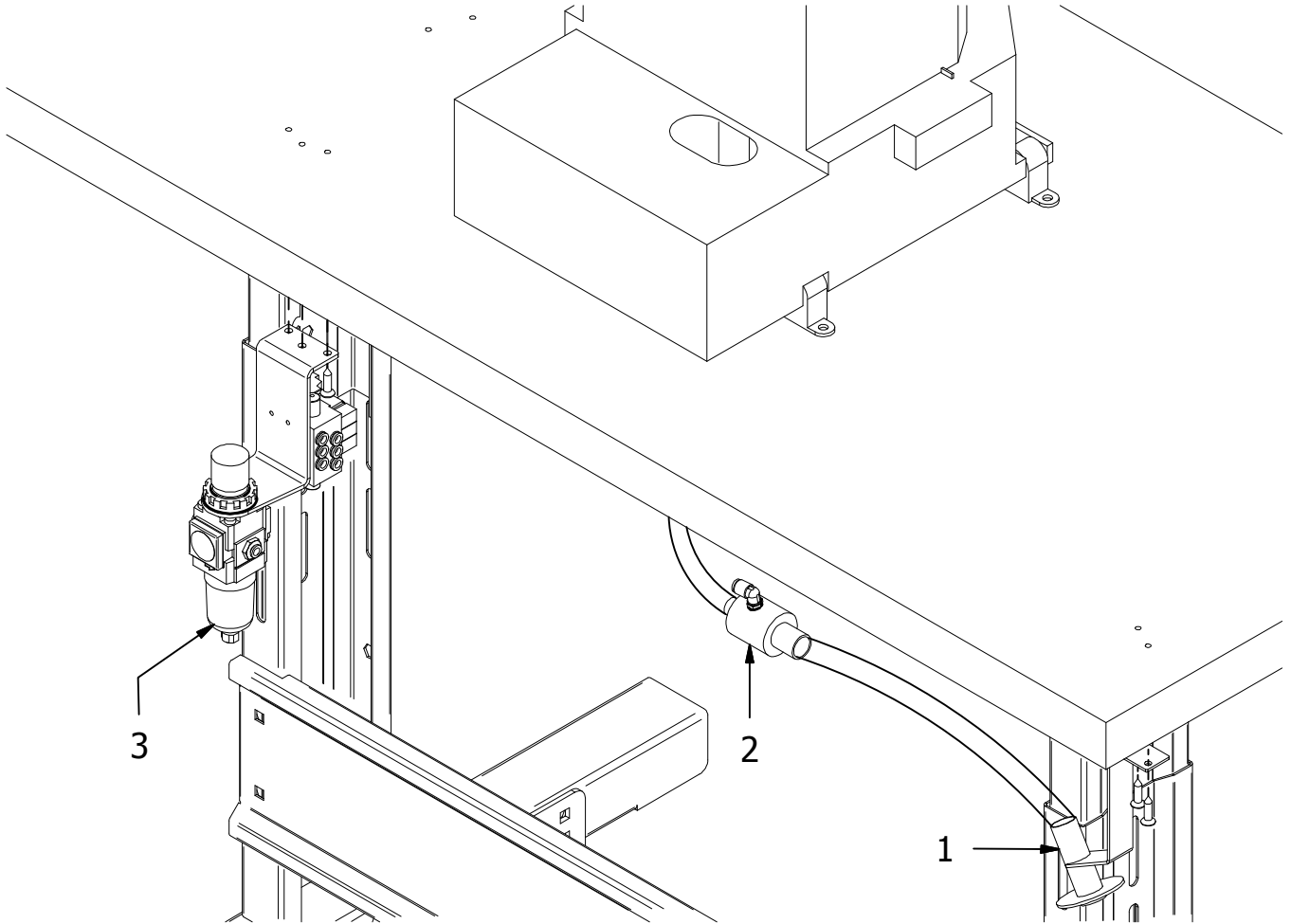
***ELITE* A.G**

Hose Connection
Data Sheet



Vacuum Device Parts		
Item	Part NUM.	Description
1	LSC_014	Regulator
2	LSC_011	Fittings
3	LSC_013	Fittings
4		Air in
5	LSC_018	Silencer
6	LSC_017	Manifold Air in
7	LSC_012	Valve
8	LCS_022	Fittings
9	LSC_020	Vacuum Device
10		Vacuum In
11		Vacuum Out
12		Blow
13		Vacuum
14		Cutting
15		Close
16		Close
17		Cutting

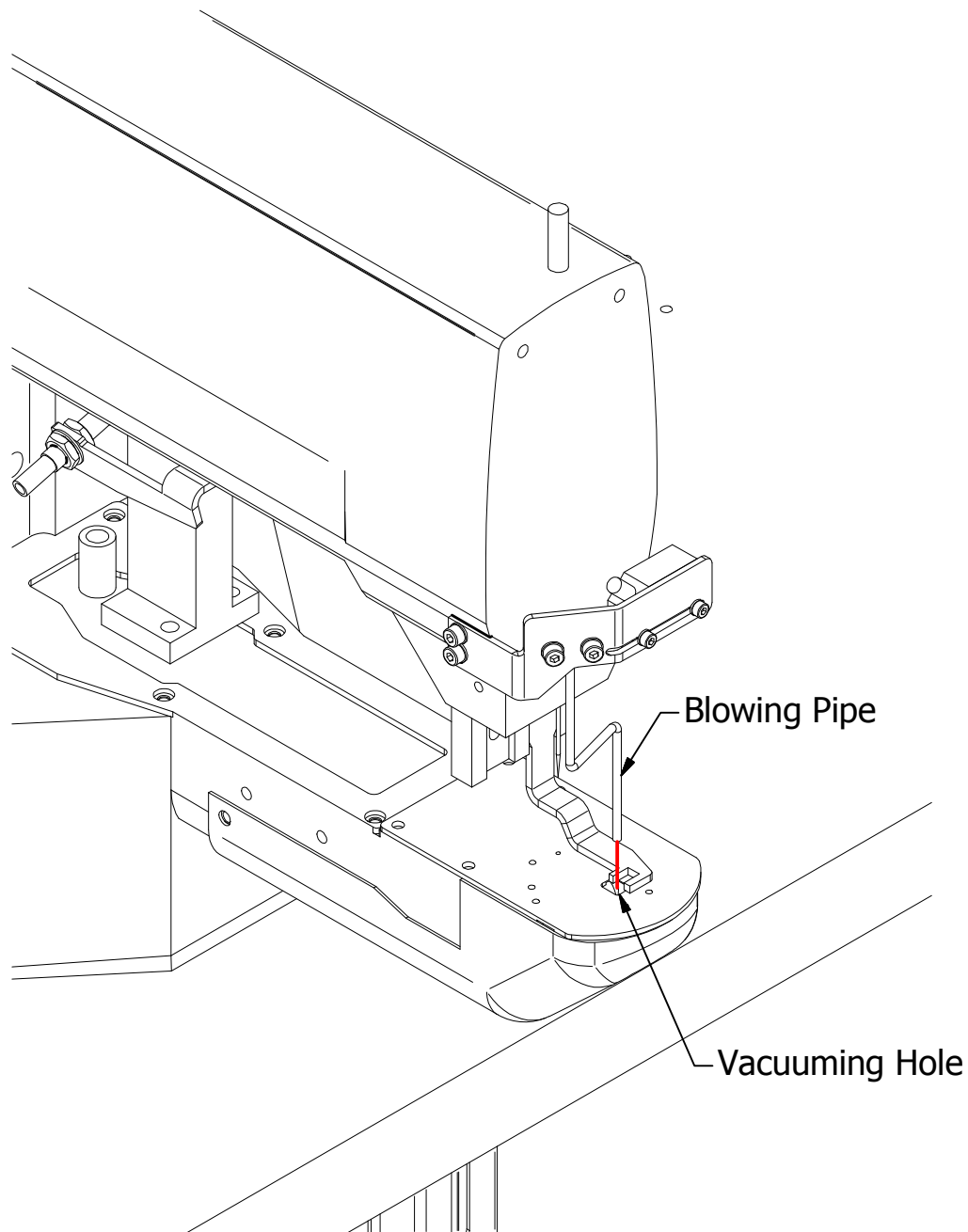
INSTALLING



Assembly Parts		
ITEM	QTY	Parts
1	1	Waste Tunnel Assembly
2	1	Vacuum Part Assembly
3	1	Regulator Assembly

***ELITE* A.G**

Blowing Adjust



BLOWING ADJUST

- Choose machine model and model number.
- Install pattern program from our SD card.
- Reset machine to home position.
- Need to adjust blowing pipe when machine at home position.(Vacuuming Hole)