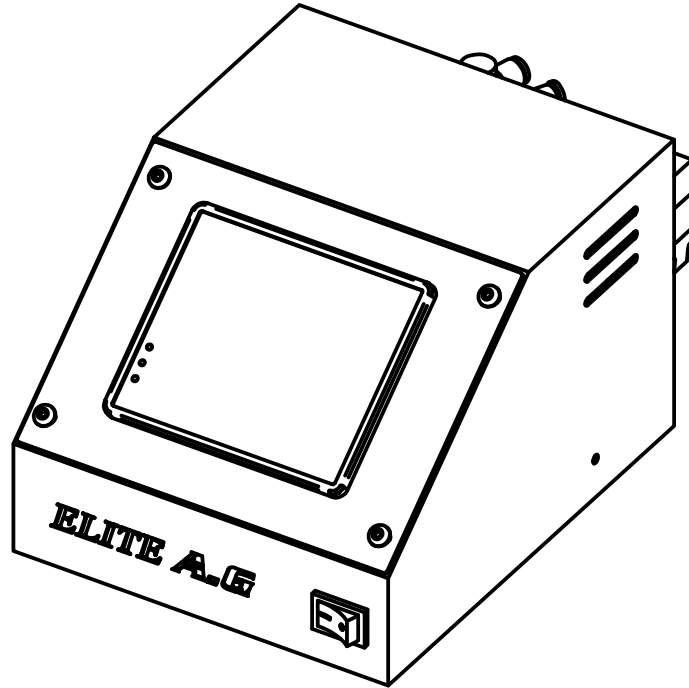


# *ELITE* A.G



**EL-071**

## **INSTRUCTION MANUAL**

**Please read this manual before using.  
Please keep this manual within easy reach for quick reference.**

**ENGLISH**

**YONTEM MAKINE SERVICE NETWORK**  
**SERVICE HOTLINE : +90 212 433 7743**  
**: +90 212 552 7979**  
**: +90 506 137 8400**

**E-MAIL : [iletisim@yontemmakine.com](mailto:iletisim@yontemmakine.com)**  
**WEB : [www.yontemmakine.com](http://www.yontemmakine.com)**

## **SAFETY INSTRUCTIONS**

**This instruction manual and the indications and symbols that are used on the machine itself are provided in order to ensure safe operation of this machine and to prevent accidents and injury to yourself or other people.**

### **CAUTION**

This machine should only be used by operators who have received the necessary training in safe use beforehand.

Attach all safety devices before using the sewing machine. If the machine is used without these devices attached, injury may result.

Do not touch any of the moving parts or press any objects against the machine while sewing, as this may result in personal injury or damage to the machine.

### **MAINTENANCE INSPECTION**

Maintenance and inspection of the device should only be carried out by a qualified technician.

Use only the proper replacement parts as specified by Elite A.G.

If any safety devices have been removed, be absolutely sure to re-install them to their original positions and check that they operate correctly before using the device.

Any problems in device operation which result from unauthorized modifications to the device will not be covered by the warranty.

## WARNING LABELS

Please follow the instructions on the labels at all times when using the device. If the labels have been removed or are difficult to read please contact ELITE A.G.



## INSTALLATION

Parts installation should only be carried out by a qualified technician.

Please contact Elite A.G. for any electrical problem that may need to be repaired.

Do not connect the power cord until installation is complete, otherwise the device may operate if the cut switch is depressed by mistake, which could result in injury.

All cord should be secured at least 25mm away from any moving parts. Furthermore, do not excessively bend the cable or secure it too firmly with staples, otherwise there is the danger that fire or electric shocks could occur.

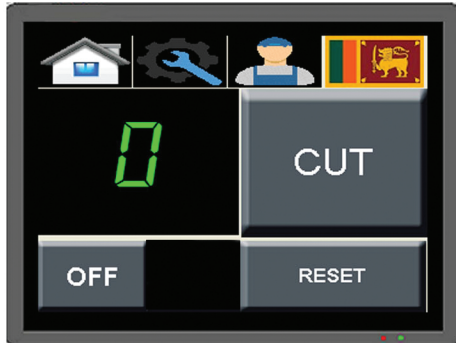
Be sure to connect the ground. If the ground connection is not secure, you run the risk of receiving a serious electric shock, and problems with correct operation may also occur.

***ELITE* A.G**

**USER MANUAL**



-Device will not start before press to continue



Manuel cut.It will not work if fabric sensor on. Need to SYSTEM OFF for use free.



Push 0.3 secs. to decrease 1 by 1. Push 2 secs. to reset.



System ON/OFF push 2 secs. OFF mode will cancel sensors and security functions.



Reset operation.



Homepage.



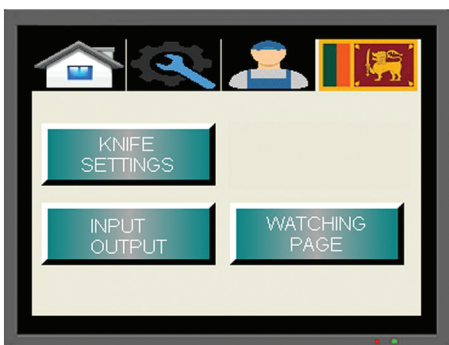
Settings menu.



Function menu.



Language : English / Turkish



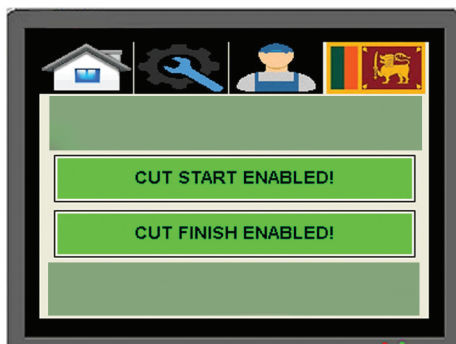
Adjust knife time and steps.



Check system hardware ( Sensors and valves )



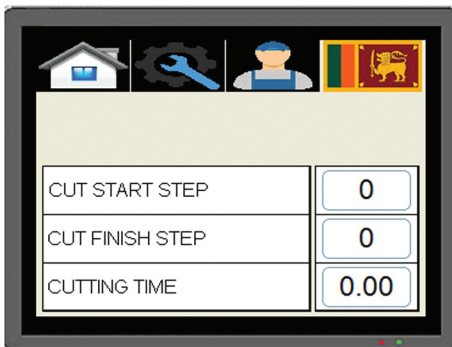
Technician menu to check system working OK or NOT.



FIRST CUT ON / OFF



END CUT ON / OFF



CUT START STEP

35 DEFAULT

-ENTER STITCH QUANTITY YOU WANT TO CUT THREAD FOR FIRST CUTTING.

CUT FINISH STEP

45 DEFAULT

-ENTER STITCH QUANTITY YOU WANT TO CUT THREAD FOR END CUTTING.

CUTTING TIME

-KNIFE CUTTING TIME.

0.04 SEC DEFAULT

|                 |    |  |
|-----------------|----|--|
| Rotation sensor | X0 |  |
| Optical sensor  | X1 |  |
| Rotation sensor | X2 |  |
| Cutting button  | X3 |  |
| Reset button    | X4 |  |
| Cutting valve   | Y0 |  |
| Blow valve      | Y1 |  |

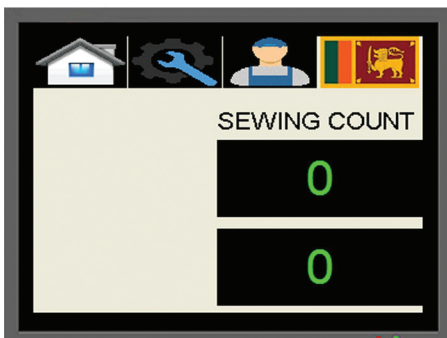
COUNTER RESET

COUNTER  
RESET

-To reset general counter.

These INPUTS and OUTPUTS original from PLC.  
You can use as a electronic schema.

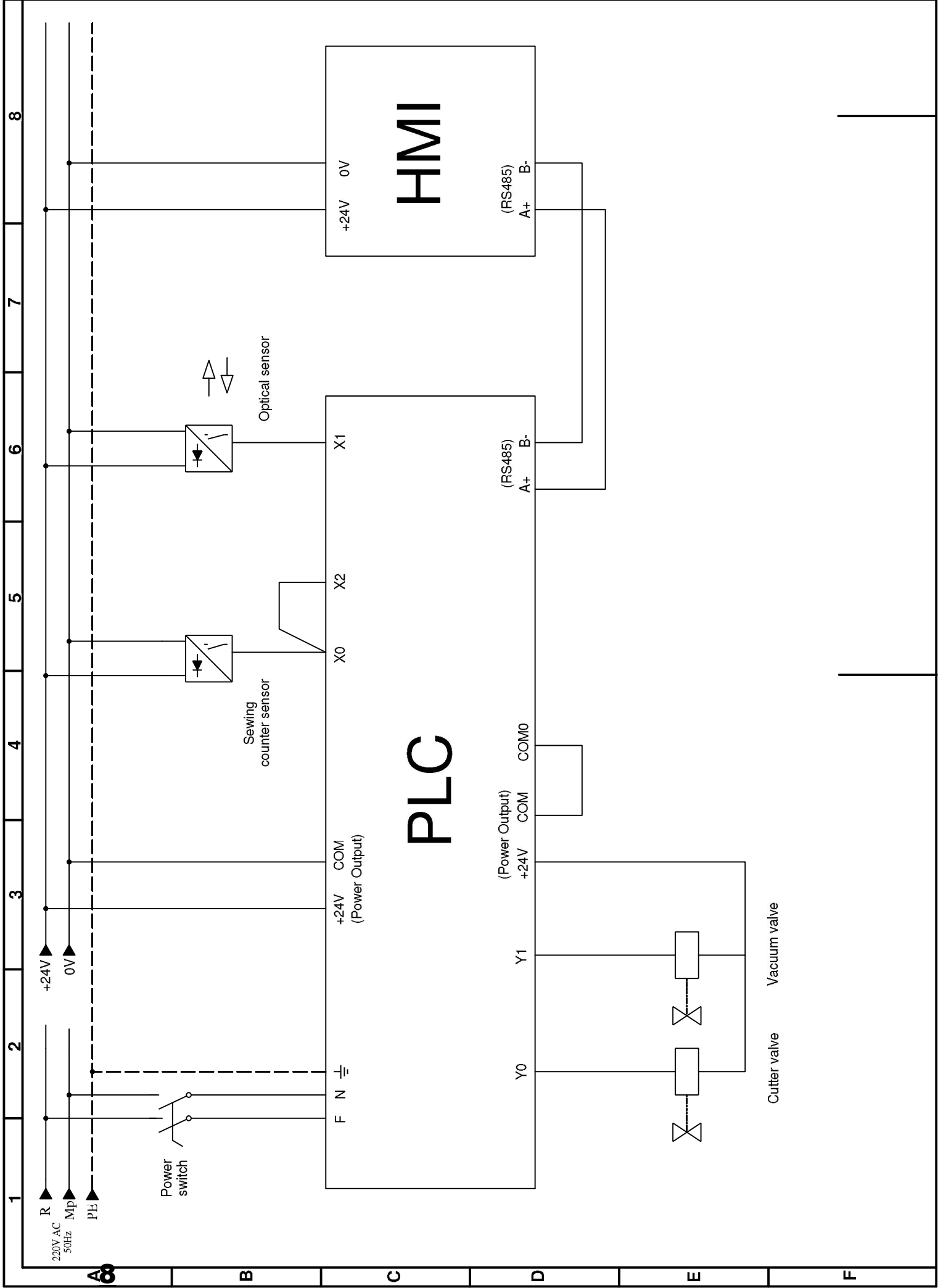
You can INSTALL extra button for CUT and BLOW with connecting to X3 (CUT) and X4 (RESET).



This is technician menu to see sensors sensivity and check for system OK or NOT.

*ELITE* **A.G**

**ELECTRICAL  
DRAWING**

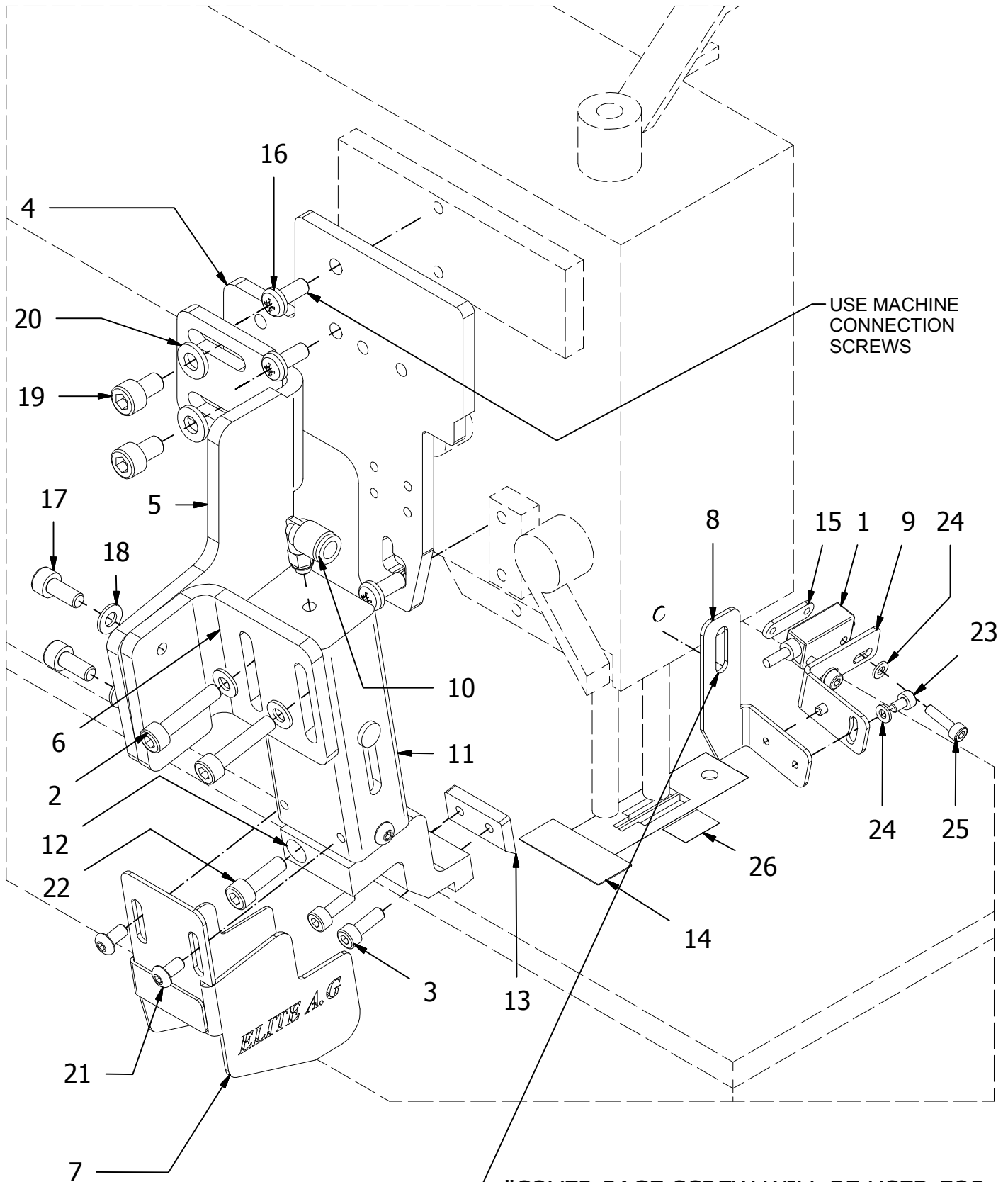




*ELITE* **A.G**

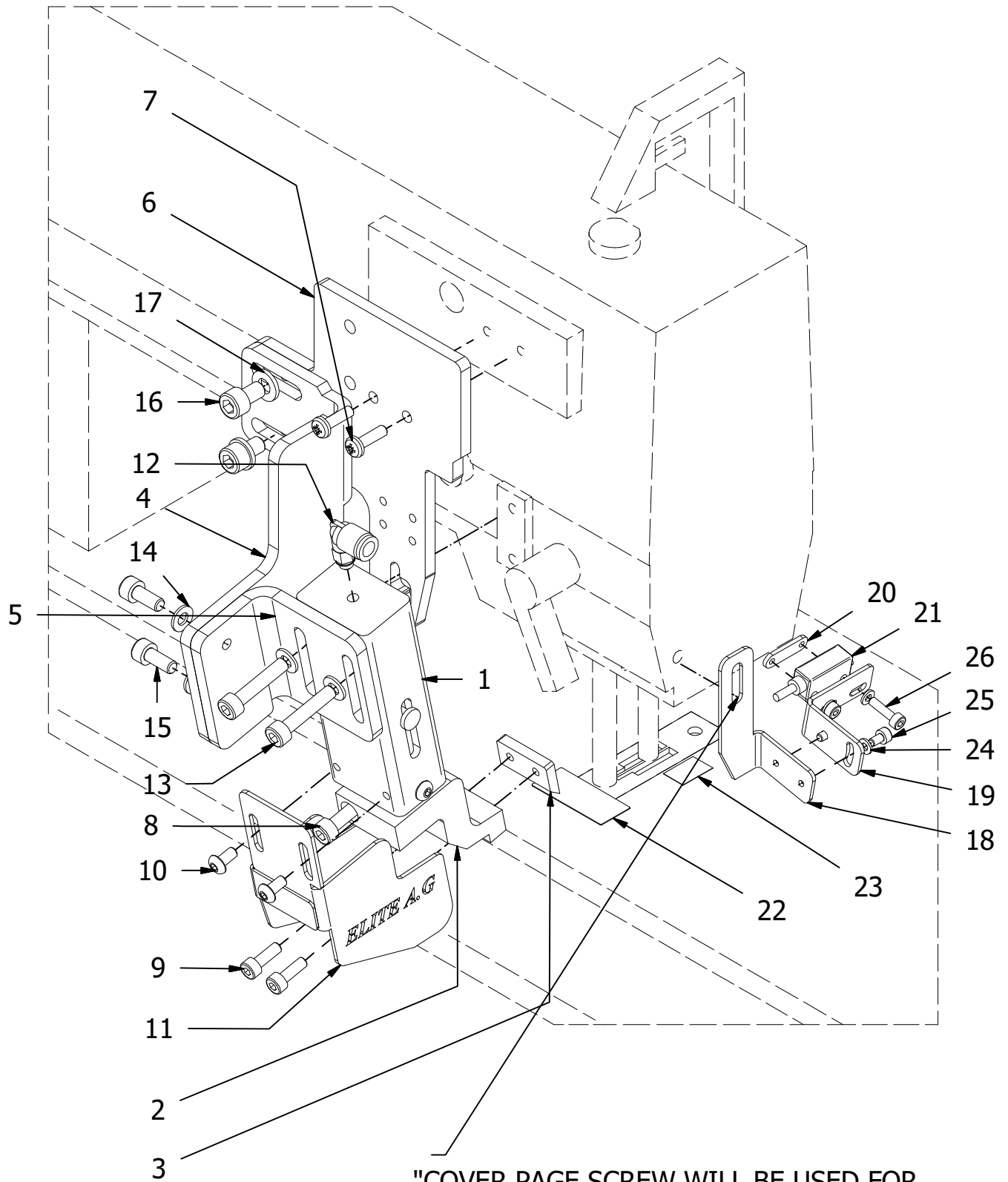
**PART LIST**

# BROTHER 8422C TYPE CONNECTION



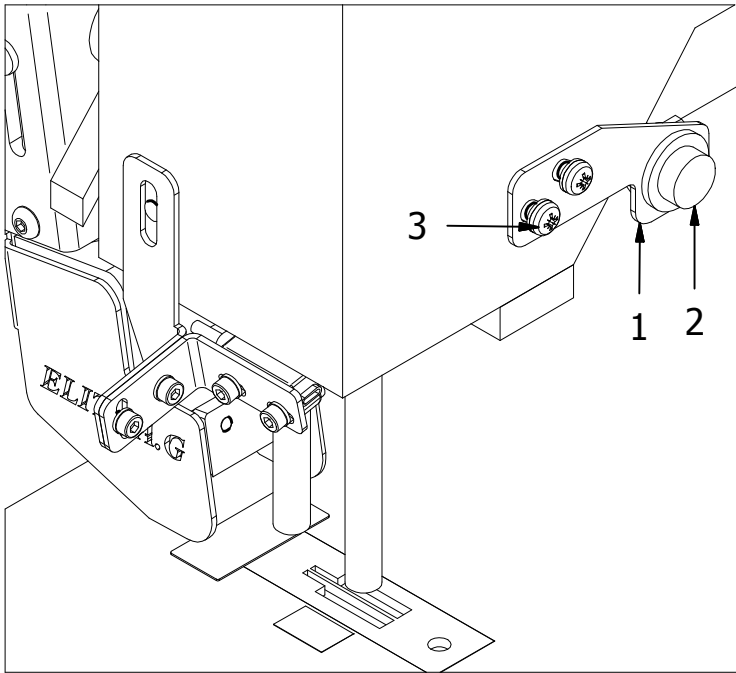
| ITEM | QTY | DESCRIPTION  | PART NUMBER                        |
|------|-----|--|------------------------------------|
| 1    | 1   | Photoelectric Sensor                               | LC_008_Q12RB6LV                    |
| 2    | 2   | Hexagon Socket Head Cap Screw                      | ISO 4762 - M5 x 25ISO              |
| 3    | 2   | Hexagon Socket Head Cap Screw                      | ISO 4762 - M4 x 12ISO              |
| 4    | 1   | Machine Assembly Plate                             | EL_071_01_T8422_B845-5_B842-905    |
| 5    | 1   | Compact Cylinder Adjust Plate                      | EL_071_02_T8422_B845-5_B842-905    |
| 6    | 1   | Compact Cylinder Adjust Plate Up-Down              | EL_071_03_T8422_B845-5_B842-905    |
| 7    | 1   | Hand Cover   | EL_071_015_T8422_B845-5_B842-905   |
| 8    | 1   | Photoelectric sensor Assembly Plate                | EL_071_011_T8422_B845-5_B842-905   |
| 9    | 1   | Photoelectric sensor Adjust Part                   | EL_071_012_T8422_B845-5_B842-905   |
| 10   | 1   | Fittings   | EL_071_017-H0161                   |
| 11   | 1   | Compact Cylinder                                   | EL_071_04-H0161                    |
| 12   | 1   | Knife Bracket                                      | EL_071_08-H0161                    |
| 13   | 1   | Knife  | EL_071_09-H0161                    |
| 13   | 1   | Special steel knife                                | EL_071_09-H0161                    |
| 14   | 1   | Bottom Knife                                       | EL_071_016_T8422_B845-5_B842-905   |
| 15   | 1   | Photoelectric sensor connection Part               | EL_071_013_T8422_B845-5_B842-905   |
| 16   | 3   | USE MACHINE CONNECTION SCREWS M5                   | ISO 7045 - M5 x 12 - 4.8 - Z - ISO |
| 17   | 2   | Hexagon Socket Head Cap Screw                      | ISO 4762 - M5 x 12ISO              |
| 18   | 4   | Plain washers for clevis pins - Product grade A    | ISO 8738 - 5(2)                    |
| 19   | 2   | Hexagon Socket Head Cap Screw                      | ISO 4762 - M6 x 10                 |
| 20   | 2   | Plain washers for clevis pins - Product grade A    | ISO 8738 - 6(2)                    |
| 21   | 4   | Hexagon Socket Button Head Screw - Product grade A | ISO 7380-1 - M4 x 8                |
| 22   | 1   | Hexagon Socket Head Cap Screw                      | ISO 4762 - M5 x 16ISO              |
| 23   | 2   | Hexagon Socket Head Cap Screw                      | ISO 4762 - M3 x 5ISO               |
| 24   | 4   | Plain washers for clevis pins - Product grade A    | ISO 8738 - 3(2)                    |
| 25   | 2   | Hexagon Socket Head Cap Screw                      | ISO 4762 - M3 x 12ISO              |
| 26   | 1   | Reflector  | EL_071_022_T8422_B845-5_B842-905   |

# BROTHER B845-5 / B842 905 TYPE CONNECTION



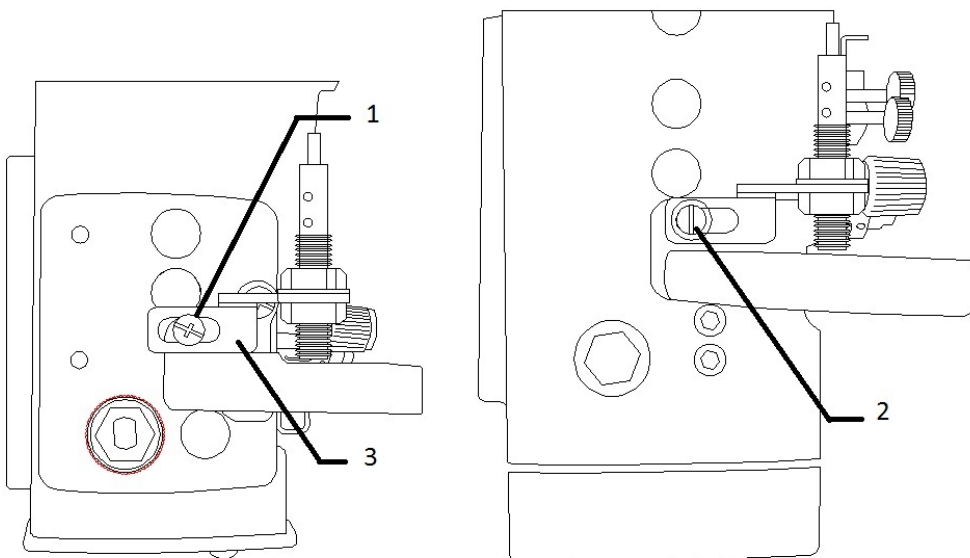
"COVER PAGE SCREW WILL BE USED FOR THE CONNECTION OF PART NUMBER 17"

| ITEM | QTY | DESCRIPTION  | PART NUMBER                      |
|------|-----|--|----------------------------------|
| 1    | 1   | Compact Cylinder                                   | EL_071_04-H0161                  |
| 2    | 1   | Knife Bracket                                      | EL_071_08-H0161                  |
| 3    | 1   | Knife  | EL_071_09-H0161                  |
| 3    | 1   | Special steel knife for elastic                    | EL_071_09-H0161                  |
| 4    | 1   | Compact Cylinder Adjust Plate                      | EL_071_02_T8422_B845-5_B842-905  |
| 5    | 1   | Compact Cylinder Adjust Plate Up-Down              | EL_071_03_T8422_B845-5_B842-905  |
| 6    | 1   | Machine Assembly Plate                             | EL_071_01_T8422_B845-5_B842-905  |
| 7    | 3   | SCREW  | DZMV-037-SS-7111410-S-SCREW      |
| 8    | 1   | Hexagon Socket Head Cap Screw ISO 4762 - M5 x 16   | ISO 4762 - M5 x 16ISO            |
| 9    | 2   | Hexagon Socket Head Cap Screw                      | ISO 4762 - M4 x 12ISO            |
| 10   | 4   | Hexagon Socket Button Head Screw - Product grade A | ISO 7380-1 - M4 x 8              |
| 11   | 1   | Hand Cover   | EL_071_015_T8422_B845-5_B842-905 |
| 12   | 1   | Fittings   | EL_071_017-H0161                 |
| 13   | 2   | Hexagon Socket Head Cap Screw                      | ISO 4762 - M5 x 25ISO            |
| 14   | 4   | Plain washers for clevis pins - Product grade A    | ISO 8738 - 5(2)                  |
| 15   | 2   | Hexagon Socket Head Cap Screw                      | ISO 4762 - M5 x 12               |
| 16   | 2   | Hexagon Socket Head Cap Screw                      | ISO 4762 - M6 x 10               |
| 17   | 2   | Plain washers for clevis pins - Product grade A    | ISO 8738 - 6(2)                  |
| 18   | 1   | Photoelectric sensor Assembly Plate                | EL_071_011_T8422_B845-5_B842-905 |
| 19   | 1   | Photoelectric sensor Adjust Part                   | EL_071_012_T8422_B845-5_B842-905 |
| 20   | 1   | Photoelectric sensor connection Part               | EL_071_013_T8422_B845-5_B842-905 |
| 21   | 1   | Q12RB6LV Photoelectric sensor                      | LC_008_Q12RB6LV                  |
| 22   | 1   | Bottom Knife                                       | EL_071_016_T8422_B845-5_B842-905 |
| 23   | 1   | Reflector  | EL_071_022_T8422_B845-5_B842-905 |
| 24   | 4   | Plain washers for clevis pins - Product grade A    | ISO 8738 - 3(2)                  |
| 25   | 2   | Hexagon Socket Head Cap Screw                      | ISO 4762 - M3 x 5ISO             |
| 26   | 2   | Hexagon Socket Head Cap Screw                      | ISO 4762 - M3 x 12ISO            |



### PARTS LIST

| ITEM | QTY | DESCRIPTION                                  | FILE NAME                        |
|------|-----|--|----------------------------------|
| 1    | 1   | Cutting Button Assembly Part                 | EL_071_014_T8422_B845-5_B842-905 |
| 2    | 1   | Cutting Button                               | EL_071_018_T8422_B845-5_B842-905 |
| 3    | 2   | BROTHER T 8422C SERIES USE MACHINE SCREWS M5 | DZMV-037-SS-7111410-S-SCREW      |



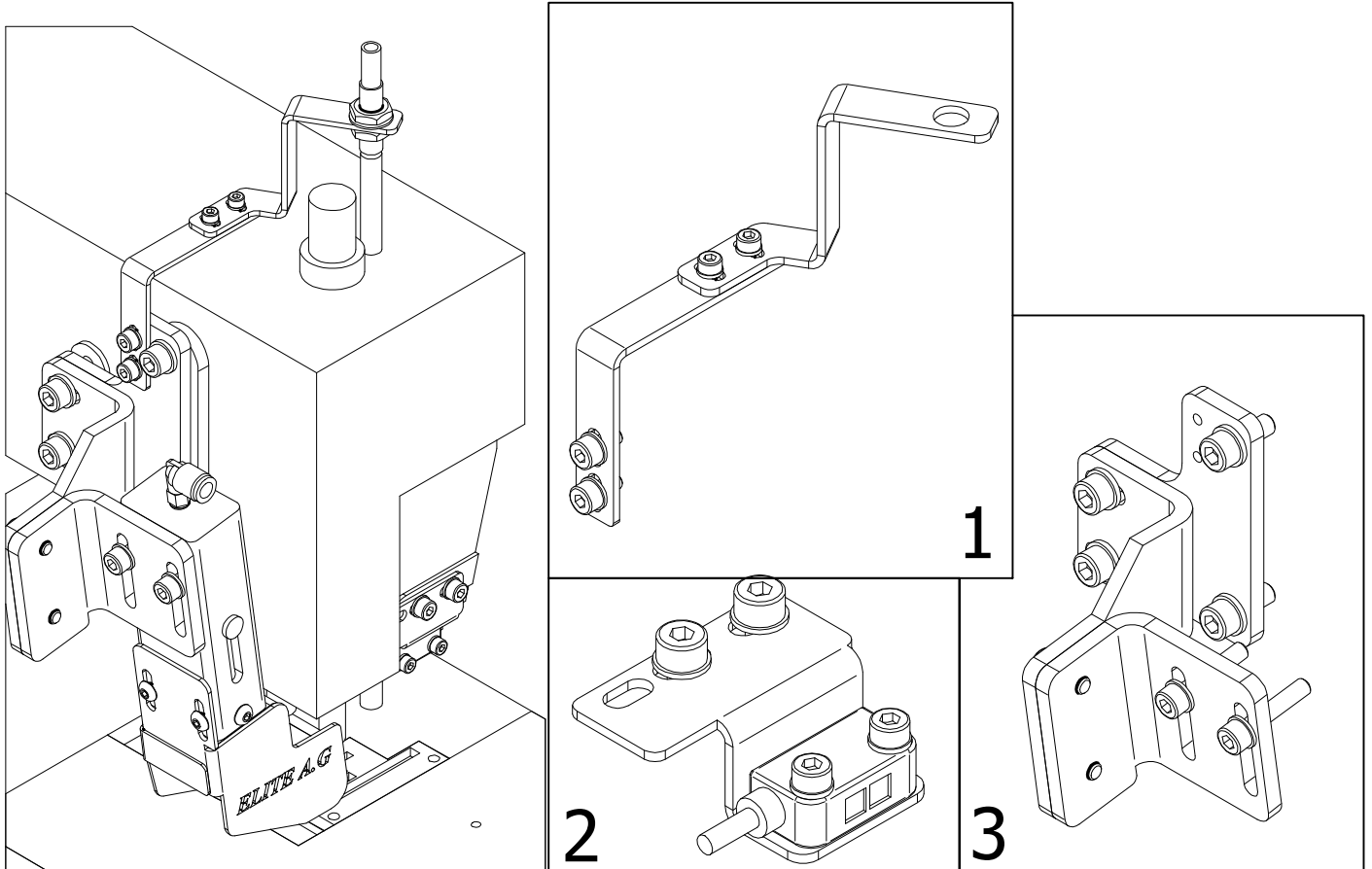
Follow the steps to connect the four sensor ;  
 1-Assamble part number 3 using the protective equipment screw on the top of the machine (screw no.1) T8422C Series / screw no.2 B842 905 - B845-5

Part number 2 : DZMV-002 SS-7091110-S 736

Part number 3 : EL\_071\_023\_T8422\_B845-5\_B842-905

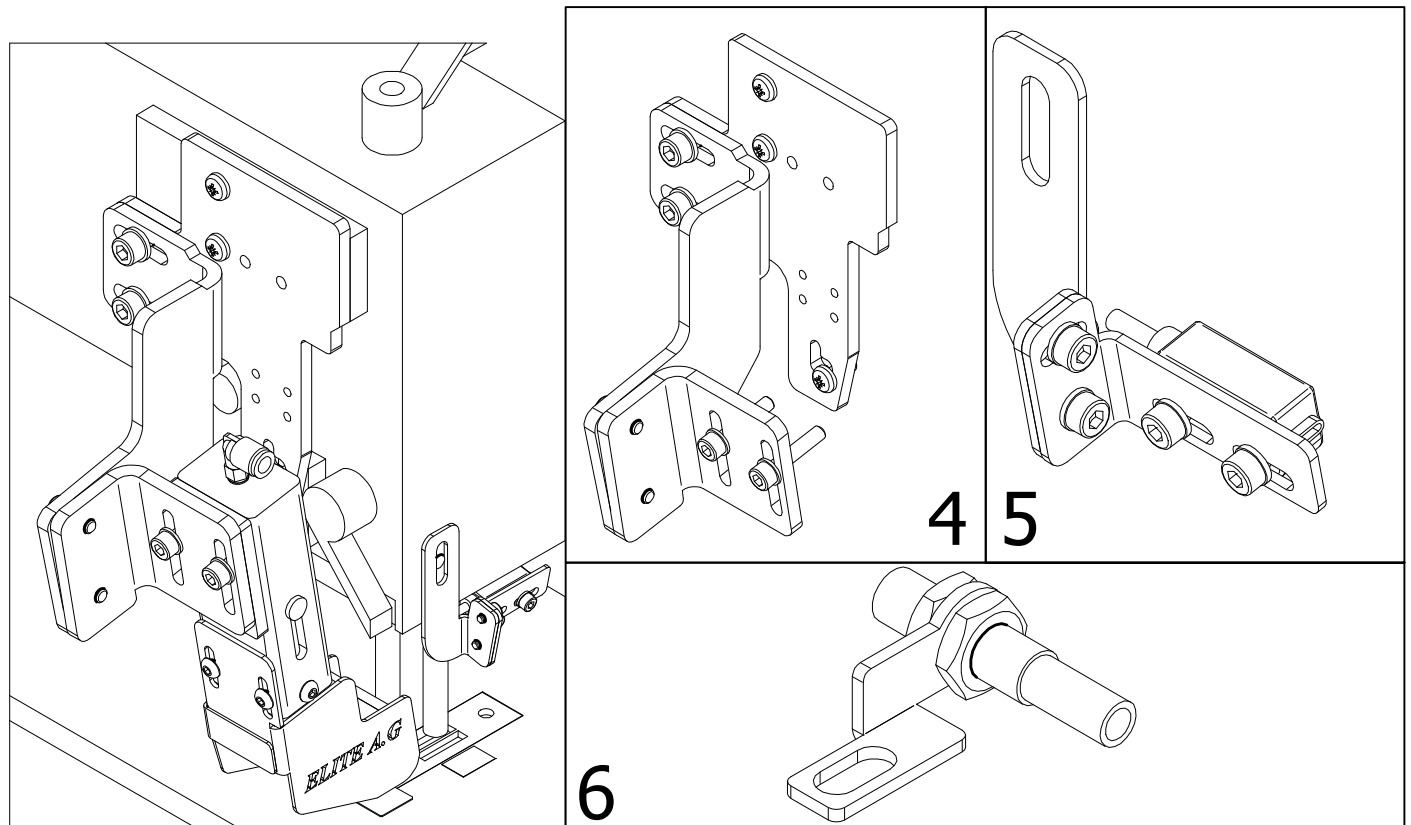
PEGASUS CW500N

**ONLY NEED TO CHANGE PISTON AND SENSORS BRACKETS UP TO MACHINE TYPES AND BRANDS.**

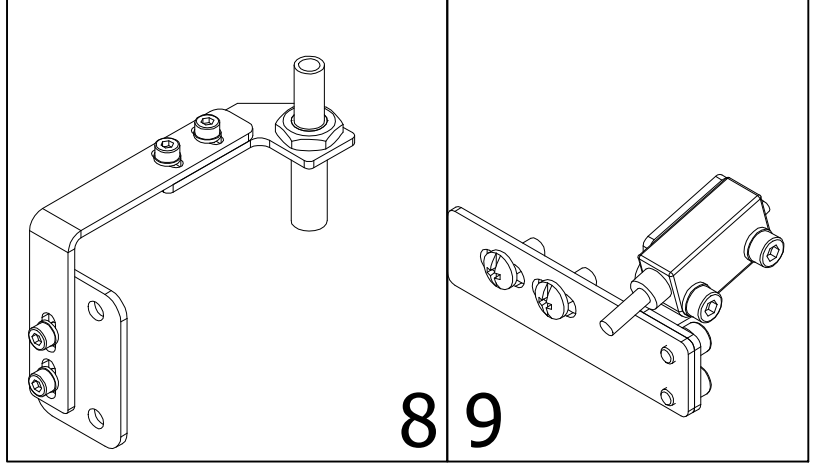
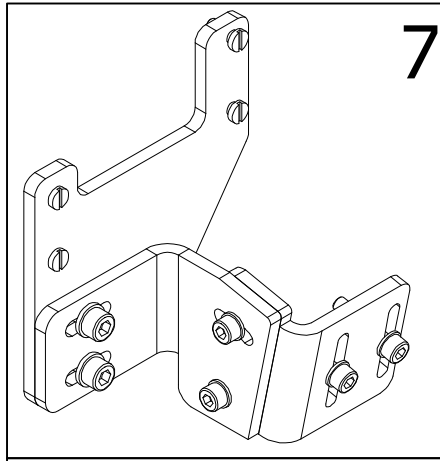
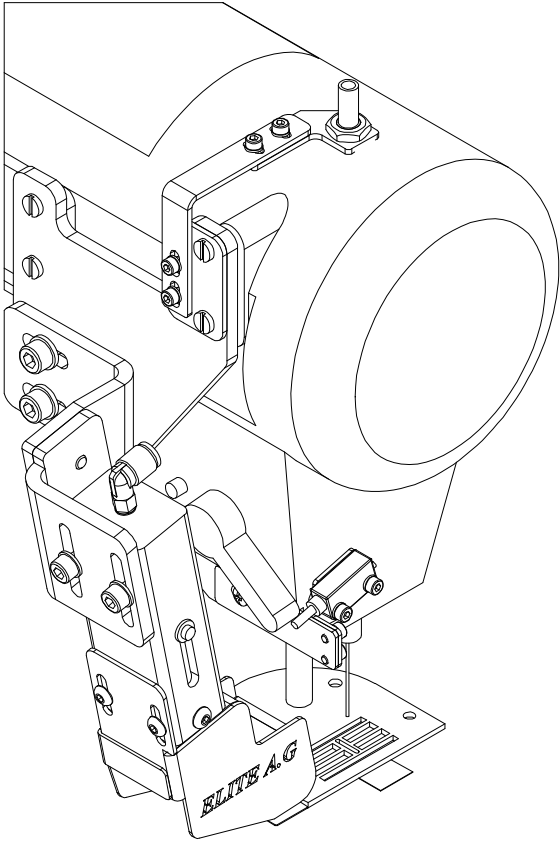


BROTHER 8422C

**ONLY NEED TO CHANGE PISTON AND SENSORS BRACKETS UP TO MACHINE TYPES AND BRANDS.**

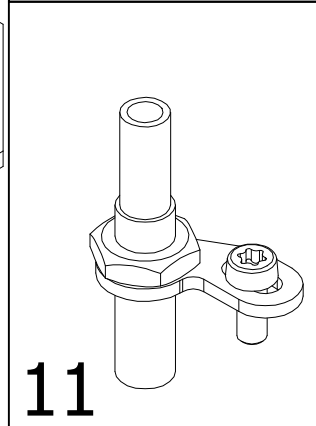
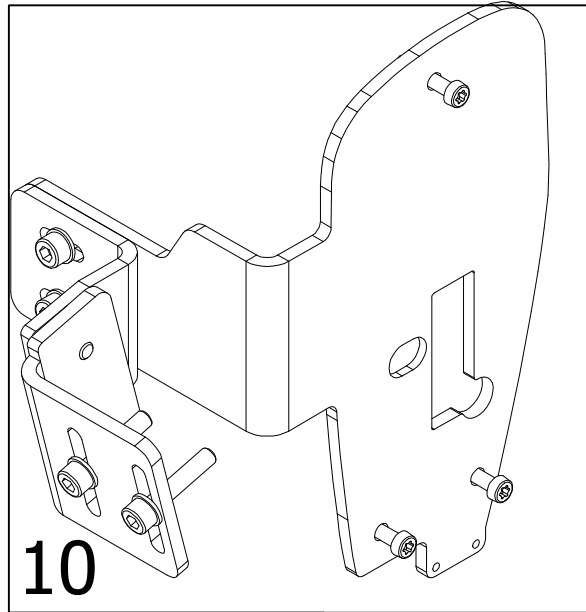
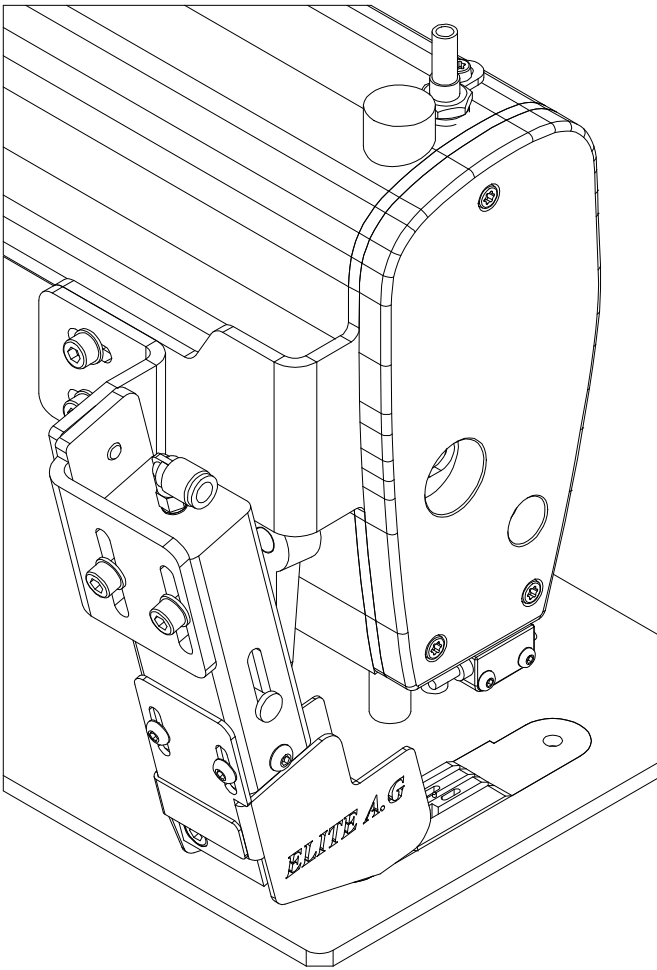


TM-2284 ZIG-ZAG



JUKI MH 380

**ONLY NEED TO CHANGE PISTON AND SENSORS BRACKETS UP TO MACHINE TYPES AND BRANDS.**





**Yöntem**

**MAKINE SAN.TIC.LTD.STI**

---

**YENIGUN MAHALLESİ BAGCILAR CADDESİ  
615 SK. NO 14/A  
BAGCILAR/İSTANBUL/TURKEY**