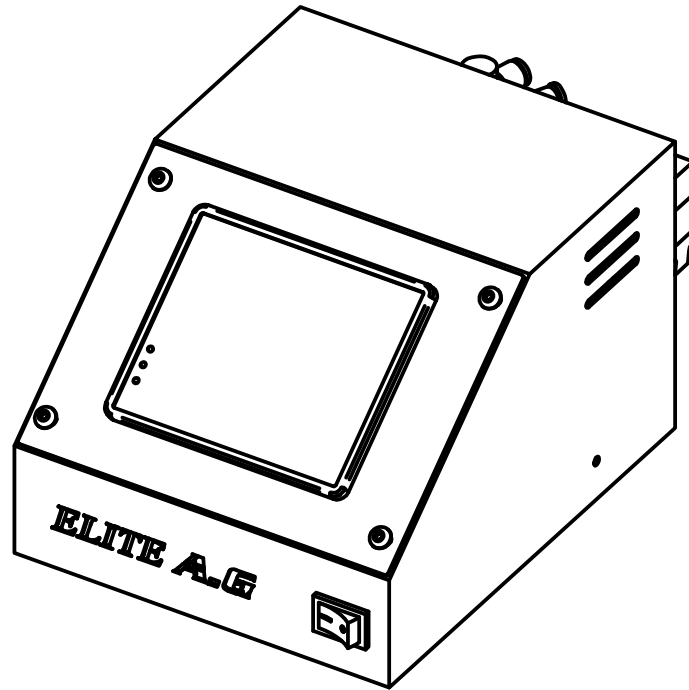


ELITE A.G



INSTRUCTION MANUAL

Please read this manual before using.
Please keep this manual within easy reach for quick reference.

ENGLISH

YONTEM MAKINE SERVICE NETWORK
SERVICE HOTLINE : +90 212 433 7743
: +90 212 552 7979
: +90 506 137 8400

E-MAIL : iletisim@yontemmakine.com
WEB : www.yontemmakine.com

SAFETY INSTRUCTIONS

This instruction manual and the indications and symbols that are used on the machine itself are provided in order to ensure safe operation of this machine and to prevent accidents and injury to yourself or other people.

CAUTION

This machine should only be used by operators who have received the necessary training in safe use beforehand.

Attach all safety devices before using the sewing machine. If the machine is used without these devices attached, injury may result.

Do not touch any of the moving parts or press any objects against the machine while sewing, as this may result in personal injury or damage to the machine.

MAINTENANCE INSPECTION

Maintenance and inspection of the device should only be carried out by a qualified technician.

Use only the proper replacement parts as specified by Elite A.G.

If any safety devices have been removed, be absolutely sure to re-install them to their original positions and check that they operate correctly before using the device.

Any problems in device operation which result from unauthorized modifications to the device will not be covered by the warranty.

WARNING LABELS

Please follow the instructions on the labels at all times when using the device. If the labels have been removed or are difficult to read please contact ELITE A.G.



INSTALLATION

Parts installation should only be carried out by a qualified technician.

Please contact Elite A.G. for any electrical problem that may need to be repaired.

Do not connect the power cord until installation is complete, otherwise the device may operate if the cut switch is depressed by mistake, which could result in injury.

All cord should be secured at least 25mm away from any moving parts. Furthermore, do not excessively bend the cable or secure it too firmly with staples, otherwise there is the danger that fire or electric shocks could occur.

Be sure to connect the ground. If the ground connection is not secure, you run the risk of receiving a serious electric shock, and problems with correct operation may also occur.

Reliability characteristic data for: Air cylinder

- Model number** : Standard type/CJ2 series
 _____ : Low friction type/CJ2Q series
 _____ : Low-speed cylinders/CJ2X series

B10 data

Based on the following endurance test results of the cylinder CJ2 series, and assuming a failure mode following the Weibull distribution the following B10 data has been estimated. (90% confidence level)

	B10
Standard type/CJ2 series	22.8 million cycles
Low friction type/CJ2Q series	4.1 million cycles
Low-speed cylinders/CJ2X series	0.8 million cycles

NOTE:

The estimated reliability data provided is only applicable to the component in the stated operating conditions. Use of this data for any assessment under standards or otherwise, is at the sole risk of the user. This product is not a safety component and is not supplied to provide a safety function.

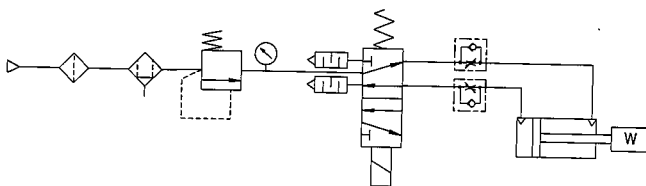
Endurance test results

For reference

- Standard type: 15 pieces were tested up to 25 million cycles, and found to have zero failure.
- Low friction type: 10 pieces were tested up to 5 million cycles, and found to have zero failure.
- Low-speed cylinders: 10 pieces were tested up to 1 million cycles, and found to have zero failure.

Endurance test conditions

1) Test circuit



- 2) Pressure: 0.5MPa
- 3) Lubrication: None
- 4) Air supply: Dry air
- 5) Operating freq.: CJ2&CJ2Q : 120times / sec.
CJ2X : 60 times / sec.
- 6) Laboratory: Life test room
- 7) Ambient temp.: Normal temp. (13 to 33 °C)
- 8) Load:

CJ2&CJ2Q : The load whose lateral load applied to the bushing is 1/40 of the maximum theoretical output/
 CJ2X : No load

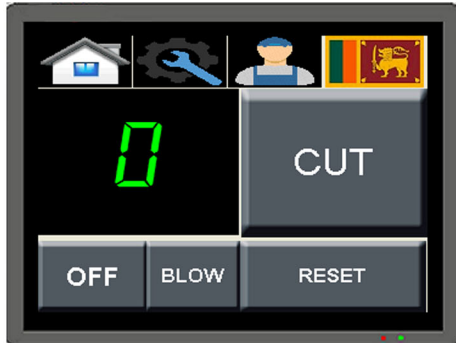
Prepared	T. MATSUDA Feb-24-2010
Checked	
Approved	T. Sato Feb-24-2010

***ELITE* A.G**

USER MANUAL



-Device will not start before press to continue



CUT

Manuel cut.It will not work if fabric sensor on. Need to SYSTEM OFF for use free.

0

Push 0.3 secs. to decrease 1 by 1. Push 2 secs. to reset.

OFF

System ON/OFF push 2 secs. OFF mode will cancel sensors and security functions.

BLOW

Manuel vacuum.

RESET

Reset operation.



Homepage.



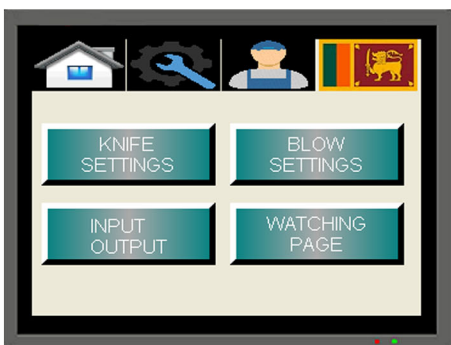
Settings menu.



Function menu.



Language : English / Turkish



KNIFE SETTINGS

Adjust knife time and steps.

BLOW SETTINGS

Adjust blow time and steps.

INPUT OUTPUT

Check system hardware (Sensors and valves)

WATCHING PAGE

Technician menu to check system working OK or NOT.



BLOW ENABLED!

CUT START ENABLED!

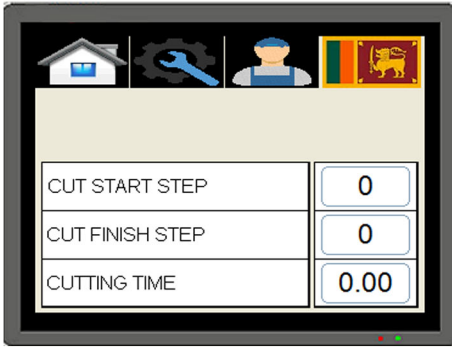
FIRST CUT ON / OFF

CUT FINISH ENABLED!

END CUT ON / OFF

CUT START BLOW ENABLED!

If you use FIRST CUT or END CUT single BLOW will CANCEL automaticly.



CUT START STEP

35 DEFAULT

-ENTER STITCH QUANTITY YOU WANT TO CUT THREAD FOR FIRST CUTTING.

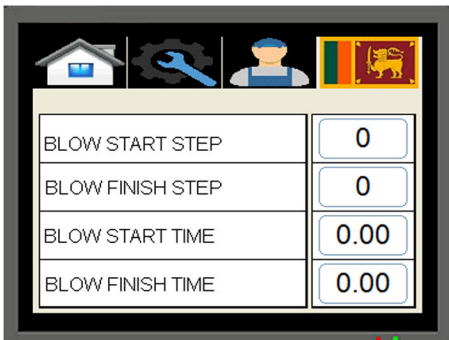
CUT FINISH STEP

45 DEFAULT

-ENTER STITCH QUANTITY YOU WANT TO CUT THREAD FOR END CUTTING.

CUTTING TIME

-KNIFE CUTTING TIME. 0.04 SEC DEFAULT



BLOW START STEP

3 DEFAULT

-ENTER STITCH QUANTITY YOU WANT TO START THREAD VACUUM AT FIRST CUTTING.

BLOW FINISH STEP

40 DEFAULT

-ENTER STITCH QUANTITY YOU WANT TO START THREAD VACUUM AT END CUTTING

BLOW START TIME

2.5 SEC DEFAULT

-ENTER VACUUM ACTIVE TIME AFTER BLOW START STEP. VACUUM WILL STOP AUTOMATICLY AFTER CUT.

BLOW FINISH TIME

2 sec DEFAULT

-ENTER VACUUM ACTIVE TIME AFTER BLOW STOP STEP. VACUUM WILL STOP AUTOMATICLY AFTER CUT.

Rotation sensor	X0	
Optical sensor	X1	
Rotation sensor	X2	
Cutting button	X3	
Reset button	X4	
Cutting valve	Y0	
Blow valve	Y1	

COUNTER RESET

COUNTER RESET

-To reset general counter.

These INPUTS and OUTPUTS original from PLC. You can use as a electronic schema.

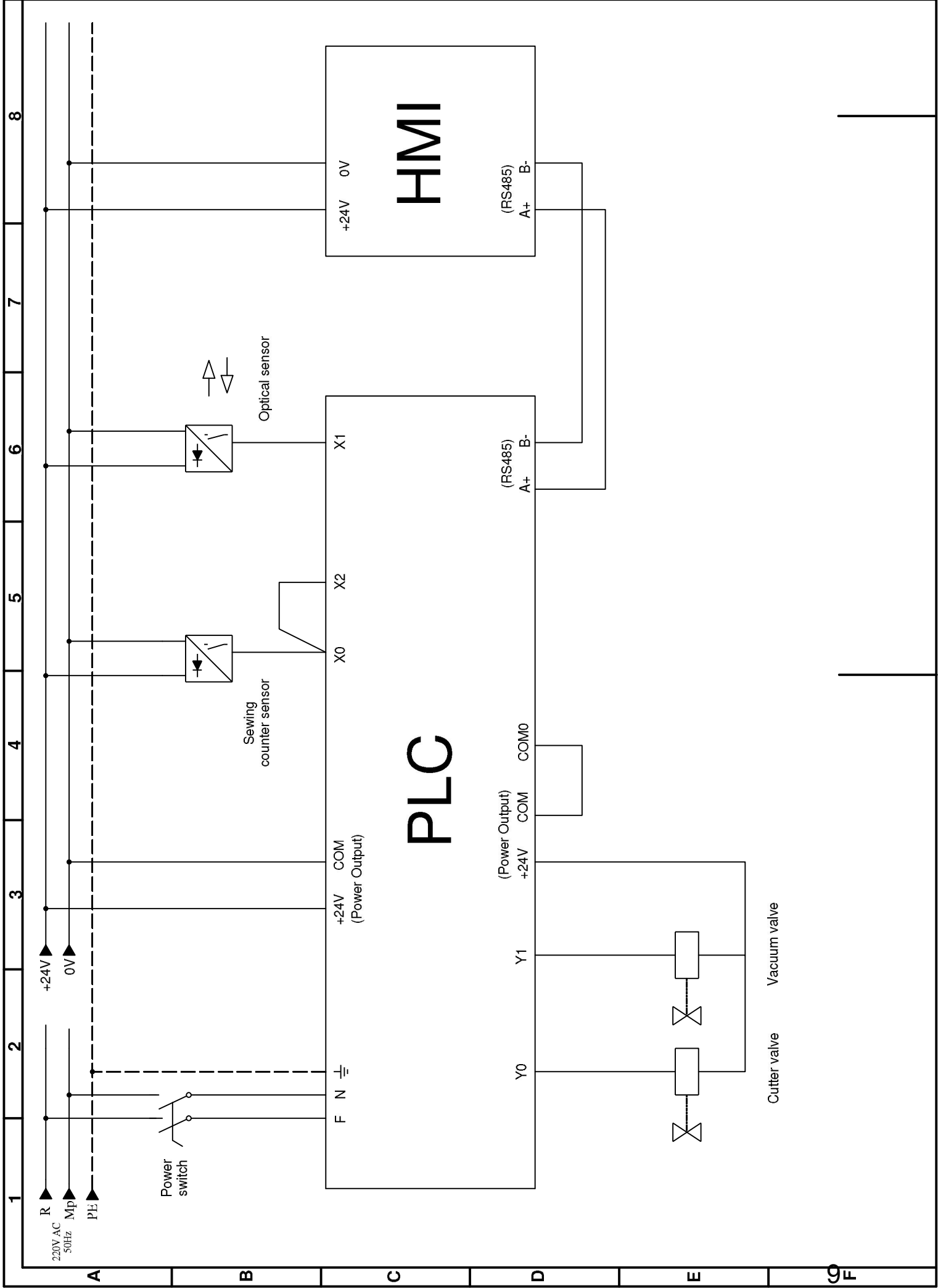
You can INSTALL extra button for CUT and BLOW with connecting to X3 (CUT) and X4 (RESET).



This is technician menu to see sensors sensivity and check for system OK or NOT.

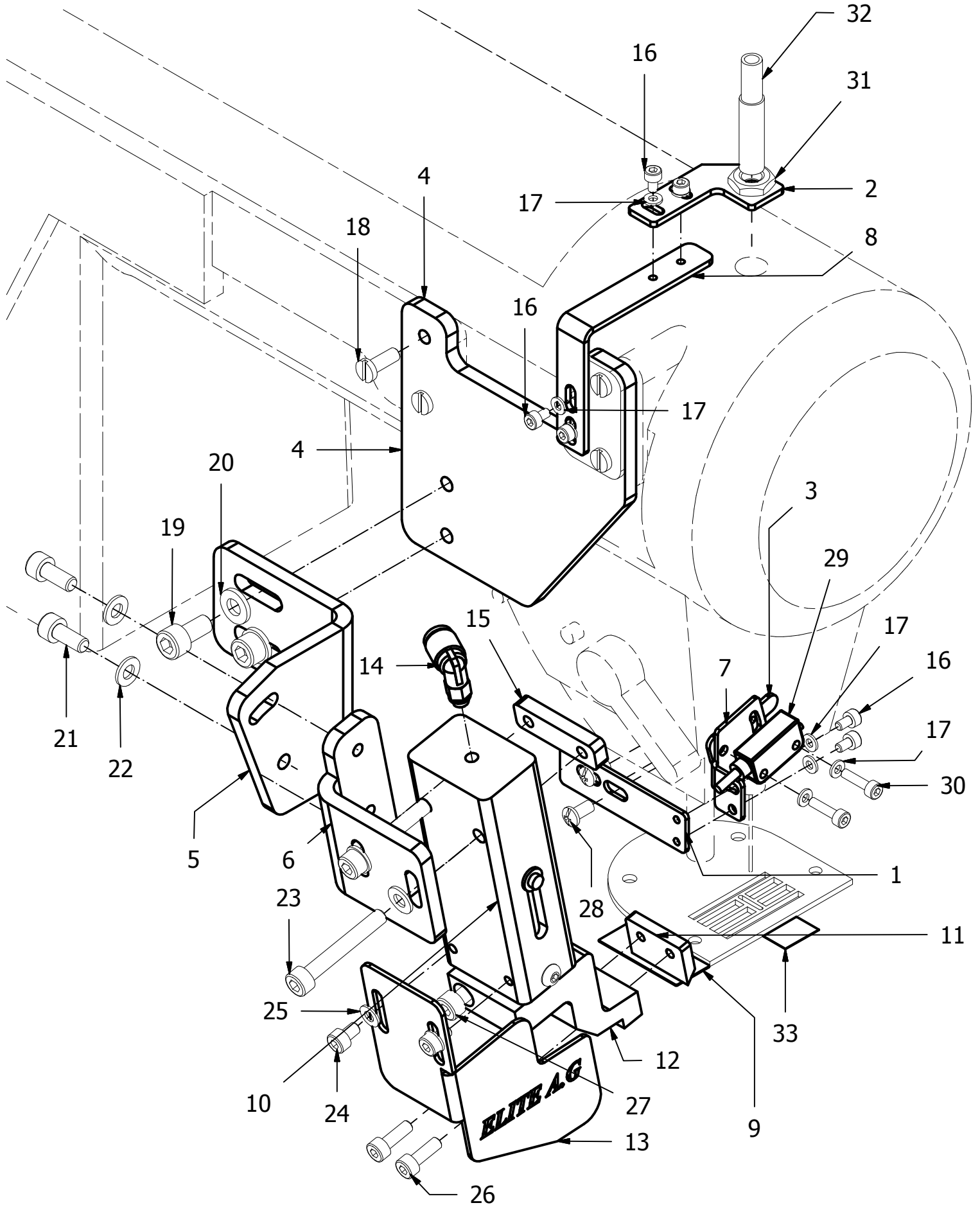
ELITE **A.G**

**ELECTRICAL
DRAWING**



***ELITE* A.G**

PART LIST



ITEM	QTY	DESCRIPTION	PART NUMBER
1	1	Mini Photoelectric Sensor Machine Assembly Plate	TM-2284_06
2	1	Proximity Sensor Connection Part	TM-2284_05
3	1	Mini Photoelectric Sensor Connection Part	EL_071_013_T8422_B845-5_B842-90
4	1	Machine Assembly Plate	TM-2284_01
5	1	Compact Cylinder Adjust Plate	TM-2284_02
6	1	Compact Cylinder Adjust Plate Up-Down	EL_071_03_T8422_B845-5_B842-905
7	1	Mini Photoelectric Sensor Assembly Part	TM-2284_07
8	1	Omron Sensor Assembly Part	TM-2284_04
9	1	Bottom Knife	EL_071_016_T8422_B845-5_B842-905
10	1	Compact Cylinder	EL_071_04-H0161
11	1	Knife	EL_071_09-H0161
11	1	Special steel knife for elastic	EL_071_09-H0161
12	1	Knife Bracket	EL_071_08-H0161
13	1	Hand Cover	EL_071_015-2T8422_B845-5_B842-905
14	1	KQ2L06-M5A Fittings	EL_071_017-H0161
16	6	Hexagon Socket Head Cap Screw	ISO 4762 - M3 x 5
17	8	Plain washers for clevis pins - Product grade A	ISO 8738 - 3(2)
18	4	3/16-28-12MM Screw	TM-2284_08_316-28-12MM
19	2	Hexagon Socket Head Cap Screw	ISO 4762 - M6 x 12ISO
20	2	Plain washers for clevis pins - Product grade A	ISO 8738 - 6(2)
21	2	Hexagon Socket Head Cap Screw	ISO 4762 - M5 x 12ISO
22	4	Plain washers for clevis pins - Product grade A	ISO 8738 - 5(2)
23	2	Hexagon Socket Head Cap Screw	ISO 4762 - M5 x 35ISO
24	2	Hexagon Socket Head Cap Screw	ISO 4762 - M4 x 6ISO
25	2	Plain washers for clevis pins - Product grade A	ISO 8738 - 4(2)
26	2	Hexagon Socket Head Cap Screw	ISO 4762 - M4 x 12ISO
27	1	Hexagon Socket Head Cap Screw	ISO 4762 - M5 x 25ISO
28	2	3/16_28x8MM Screw	TM-2284_09_316_28x8MM
29	1	Q12RB6LV Mini Photoelectric Sensor	LC_008
30	2	Hexagon Socket Head Cap Screw	ISO 4762 - M3 x 12ISO
31	1	M8 Nut	LC_019
32	1	E2B-SO8KS02-WP-B1 Proximity Sensor	LC_021
33	1	Reflector	EL_071_022_T8422_B845-5_B842-905

Yöntem

MAKINE SAN.TIC.LTD.STI

**YENIGUN MAHALLESİ BAGCILAR CADDESİ
615 SK. NO 14/A
BAGCILAR/İSTANBUL/TURKEY**